

# Explosion Proof Type LED Lighting Fittings

**SEIWA**  
STARLED ★S

# WLZAA

**NEW**  
to be released  
in April 2019



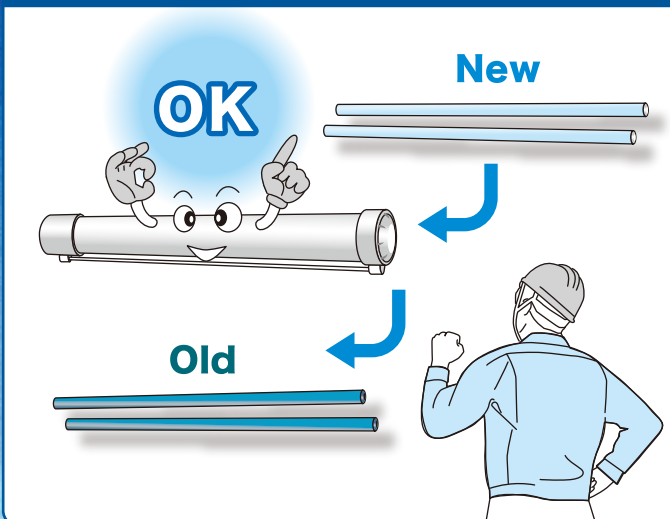
Hazardous Area	Type of Protection	Degree of Protection	Lamp Life
Zone 1/2	Ex db IIB+H <sub>2</sub> T6T5 (T4)	IP 67	50,000 hours



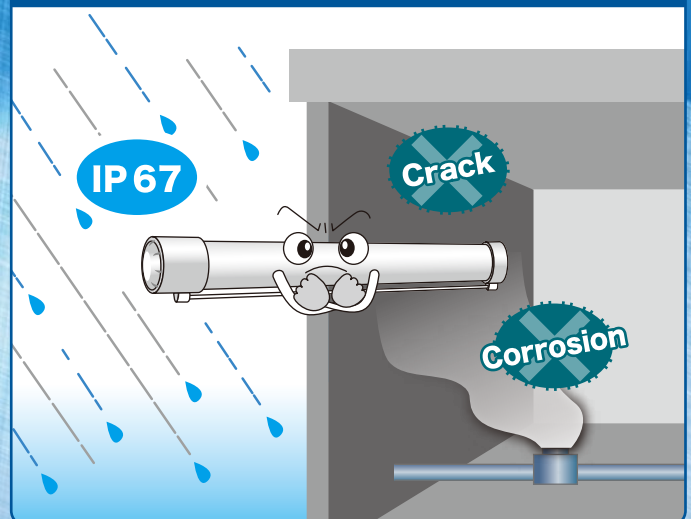
TIS 1955-2551

- Exchangeable LED Lamp -Certificate: IECEx, ATEX
- Application: Zone 1 and Zone 2 -Able to use in H<sub>2</sub> generated area
- Corrosion proof slim body

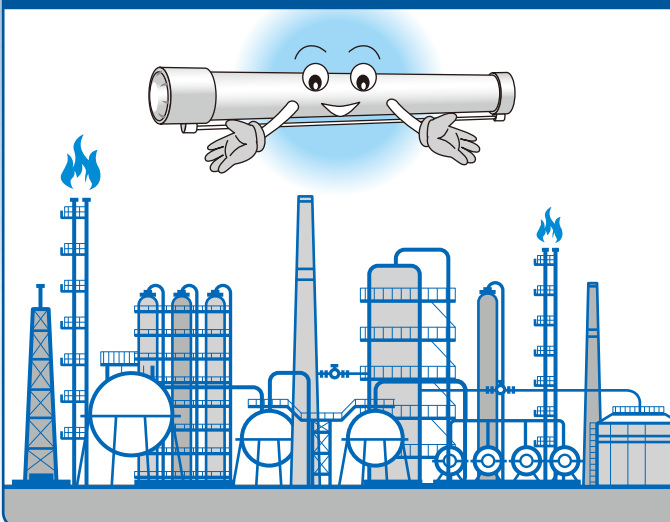
**1** LED lamps can be exchanged on the customers side.



**2** The IP 67 enclosure of aluminum alloy and hard glass withstands harsh outside environment.



**3** It can be used in various hazardous areas including H<sub>2</sub> generated area.



**4** You can purchase the product assured with 5-year warranty,

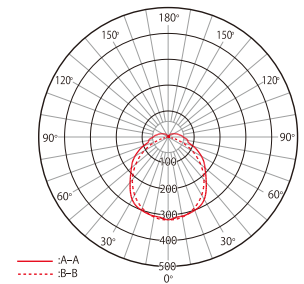


# WLZAA

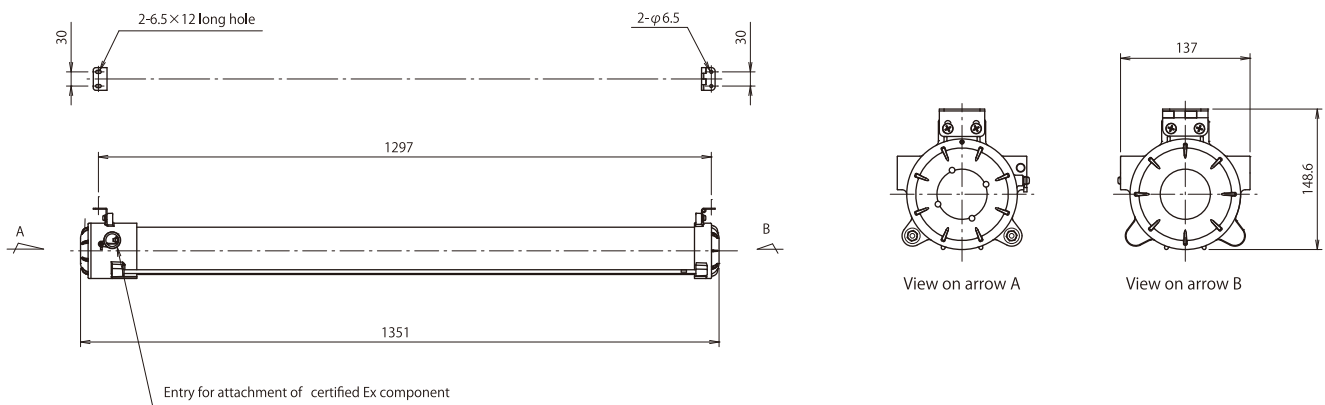
## Specifications

Rated Voltage	220~242V AC	Beam Angle	115°
Frequency	50/60 Hz	Type of Protection	Ex db IIB+H <sub>2</sub> T6 T5 (T4)* *depends on temperature
Power Consumption	28 W	Degree of Protection	IP 67
Luminaire Flux	3,550 Lm	Ambient Temperature	-20 ~ +55°C
Intrinsic Energy Consumption Efficiency	128.6 Lm/W	Body Material	ADC 12
Light Source	White LED	Paint Specification	Baked acrylic paint
Correlated Color Temperature	6,500 K	Body Dimensions	W:1,351mm L:137mm H: 173mm
Luminaire Life	50,000 hours	Weight	12.3 kg
General Color Rendering Index	Ra 83		

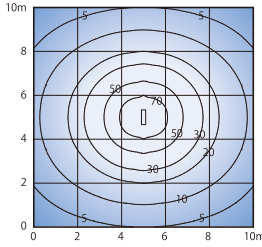
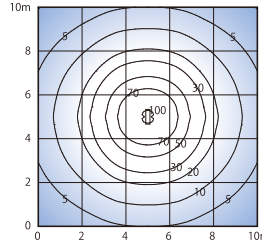
## Light Distribution (Unit: cd/1,000 Lm)



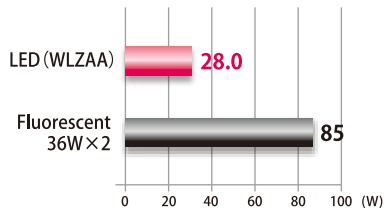
## Dimensions



## Comparison

[1 Unit Comparison]			
Subject	Fluorescent 36W×2		LED (WLZAA)
Distribution Curve			
Quantity	1 set	Equivalent	1 set
Average Illuminance	19.9 Lx	Equivalent	20.4 Lx
Power Consumption	85 W	64% Down	28 W

**Power Consumption (W)**



[Calculation Condition] Lighting Quantity : 1set, Area : 10m×10m, Lighting Height : 3m, Reflectance : Direct

The information in this brochure is as of February 2019. It is subject to change without notice.

**SEIWA** SEIWA ELECTRIC MFG. CO., LTD.  
<https://www.seiwa.co.jp>

Tokyo Branch: [Overseas Business Promotion Div.]  
 Yanagibashi First Bldg, 2-19-6 Yanagibashi, Taito-ku, Tokyo, 111-0052 Japan  
 Tel.81-3-5833-8948 Fax.81-3-5833-8971 info@seiwa.co.jp

●For ordering or further information, contact us.

This brochure is printed in eco-friendly vegetable-oil based ink.

